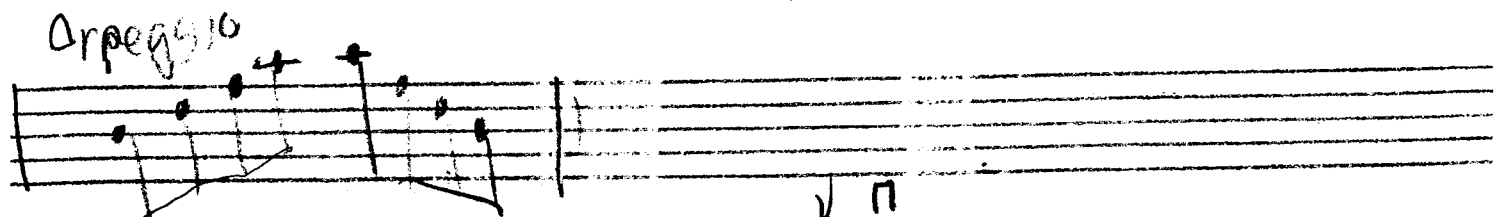
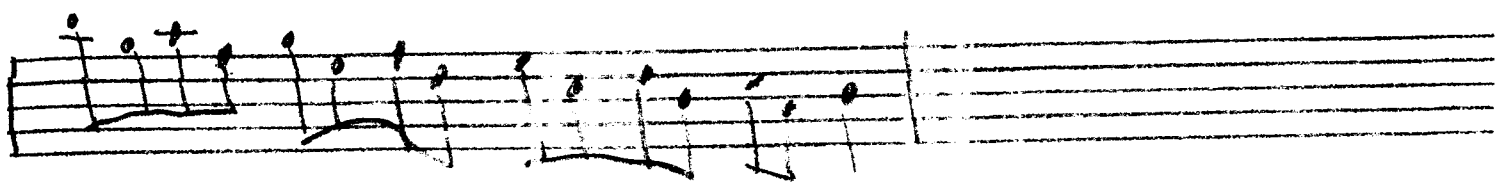
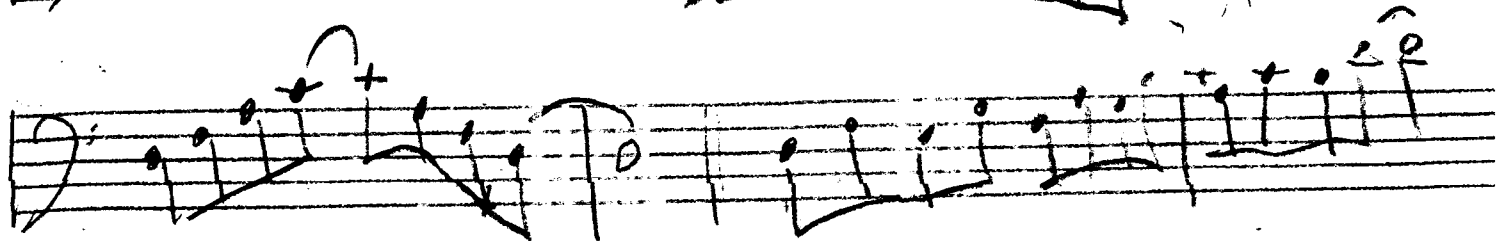
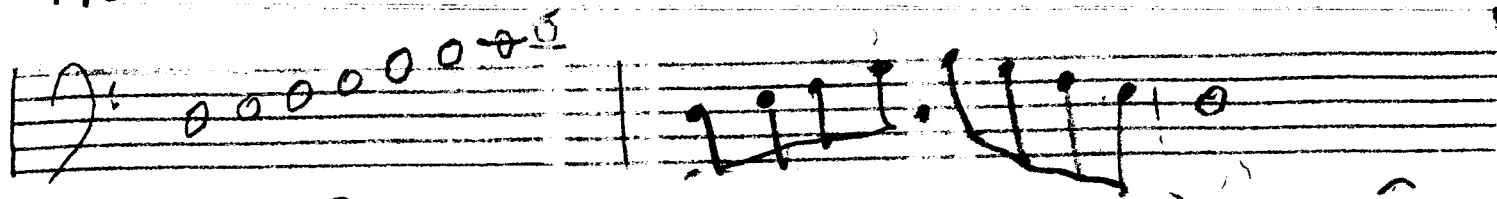


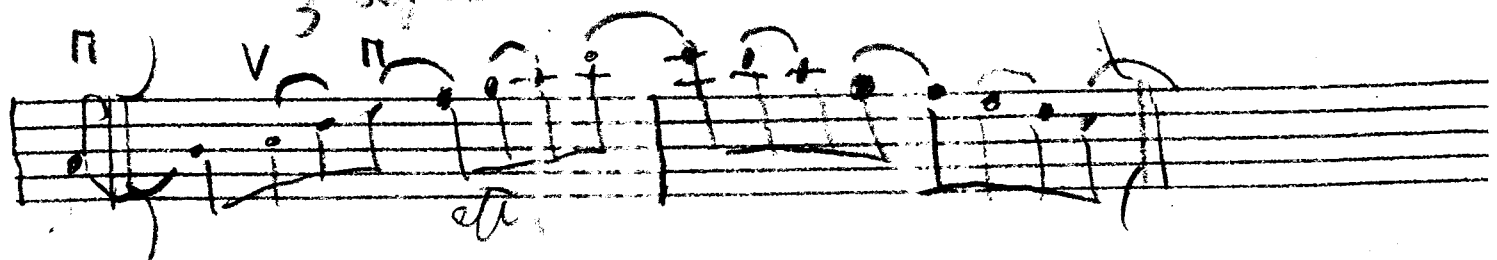
# The Dorian Mode Bass Clef



1) saw bows

2) asc/desc

3) saw bows V A V A



exercise w/ recording

practice these with any scale and  
in all keys

# The Dorian Mode

Handwritten musical notation for the Dorian mode, consisting of three staves. The first staff shows a scale of whole notes. The second and third staves show a melodic line with eighth and sixteenth notes, including a repeat sign in the second staff.

*allegro*

Bowings for Jazz

Handwritten musical notation for bowings, showing two staves with notes and bowing marks (v, ^).

1 sep bows

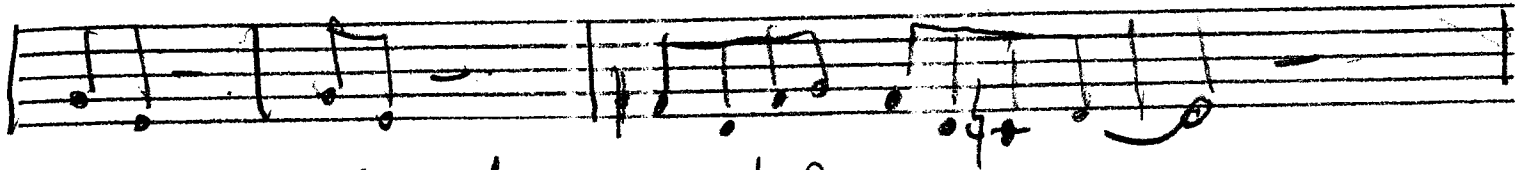
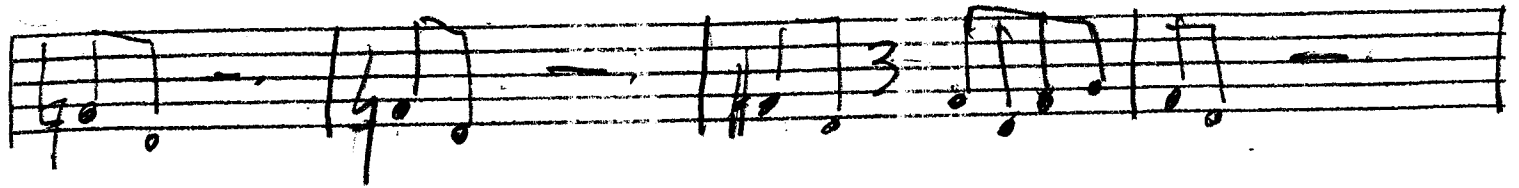
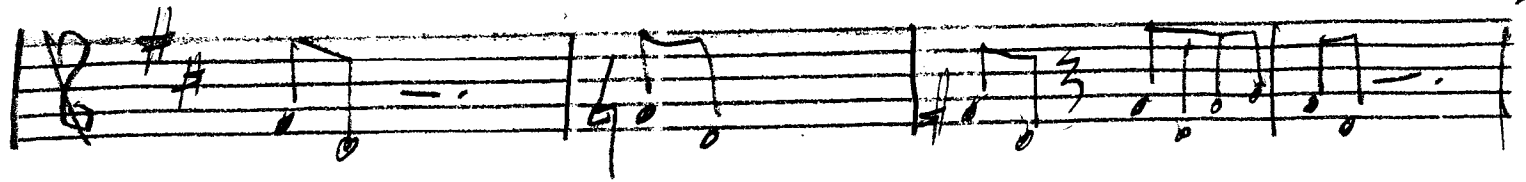
2 as above

3 sep bows

Handwritten musical notation for three separate bowings, showing a single staff with notes and bowing marks (v, ^).

Exercise is recorded  
practice the bowings (stars)  
with all scales in all keys

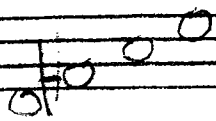
# The Blues



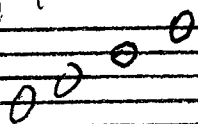
single idea  $\rightarrow$  motif

Chords

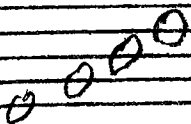
D7



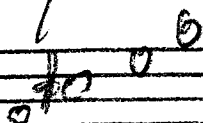
G7



E $\flat$ m7 (minor?)

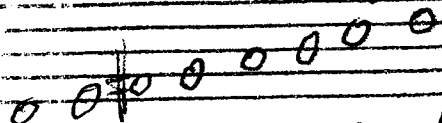


A7

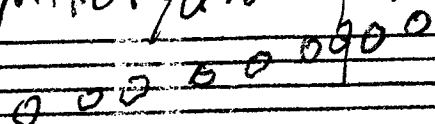


Scales  
Mixolydian

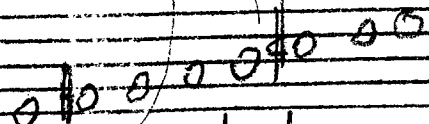
major 7



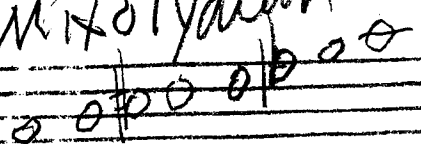
Mixolydian major 7



Dorian major / b3 b7



Mixolydian major 7



# Guide Tones

Handwritten musical notation on three staves. The first staff shows a treble clef, a key signature of one sharp (F#), and a 4/4 time signature. It contains four measures of guide tones: the first measure has F#4 and C5; the second has G4 and D5; the third has A4 and E5; and the fourth has a slash. The second staff contains four measures: the first has F#4 and C5; the second has a slash; the third has G4 and D5; and the fourth has a slash. The third staff contains four measures: the first has F#4 and C5; the second has G#4 and D5; the third has A4 and E5; and the fourth has a slash.

Swing feeling

not over

in swing ♩ ≠ !? also ♩ ≠ ♩

Musical was played before it was  
written down " swing length notes"  
not notatable



# The Blues

Bob Dylan

Handwritten musical notation for guitar on a treble clef staff. The key signature has three sharps (F#, C#, G#). The notation includes several measures with notes and rests, and is annotated with chords: E7, A7, and F#m7. The notes are primarily eighth and quarter notes.

Chord E7

scale Mixolydian major/b7

Handwritten chord diagram for E7 on a six-string guitar. The notes are: 2nd fret on the 4th string, 2nd fret on the 5th string, and 0th fret on the 6th string.

Handwritten chord diagram for Mixolydian major/b7 scale on a six-string guitar. The notes are: 0th fret on the 6th string, 2nd fret on the 5th string, 2nd fret on the 4th string, 0th fret on the 3rd string, 0th fret on the 2nd string, and 0th fret on the 1st string.

Handwritten chord diagram for A7 on a six-string guitar. The notes are: 0th fret on the 5th string, 2nd fret on the 4th string, 2nd fret on the 3rd string, 0th fret on the 2nd string, 0th fret on the 1st string, and 0th fret on the 6th string.

Handwritten chord diagram for Mixolydian major/b7 scale on a six-string guitar. The notes are: 0th fret on the 6th string, 2nd fret on the 5th string, 2nd fret on the 4th string, 0th fret on the 3rd string, 0th fret on the 2nd string, and 0th fret on the 1st string.

F#m7 (minor)

Down - any w/b7

Handwritten chord diagram for F#m7 (minor) on a six-string guitar. The notes are: 0th fret on the 5th string, 2nd fret on the 4th string, 2nd fret on the 3rd string, 0th fret on the 2nd string, 0th fret on the 1st string, and 0th fret on the 6th string.

Handwritten chord diagram for Down - any w/b7 scale on a six-string guitar. The notes are: 0th fret on the 6th string, 2nd fret on the 5th string, 2nd fret on the 4th string, 0th fret on the 3rd string, 0th fret on the 2nd string, and 0th fret on the 1st string.

B7

Mixolydian major/b7

Handwritten chord diagram for B7 on a six-string guitar. The notes are: 0th fret on the 5th string, 2nd fret on the 4th string, 2nd fret on the 3rd string, 0th fret on the 2nd string, 0th fret on the 1st string, and 0th fret on the 6th string.

Handwritten chord diagram for Mixolydian major/b7 scale on a six-string guitar. The notes are: 0th fret on the 6th string, 2nd fret on the 5th string, 2nd fret on the 4th string, 0th fret on the 3rd string, 0th fret on the 2nd string, and 0th fret on the 1st string.

# Guide Tones Bb transp

Handwritten musical notation for guide tones in Bb transposition. It consists of three staves. The first staff has a treble clef and a key signature of three sharps (F#, C#, G#). The notes are: G#4, A4, B4, C5, D5, E5, F#5, G#5. The second staff has a bass clef and notes: G2, A2, B2, C3, D3, E3, F#3, G#3. The third staff has a bass clef and notes: G2, A2, B2, C3, D3, E3, F#3, G#3. There are some additional markings and slurs.

Swing feeling

notation

Handwritten musical notation showing a sequence of notes with a triplet marking. The notes are: G4, A4, B4, C5, D5, E5, F#5, G#5. There is a triplet marking over the last three notes (D5, E5, F#5).

Musical was played before it  
was written down // swing eighth notes  
not notatable