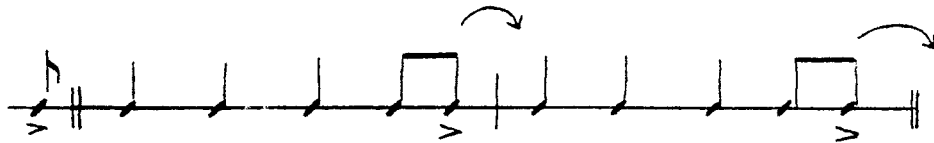


MUSIC
JAZZ IMPROVISATION

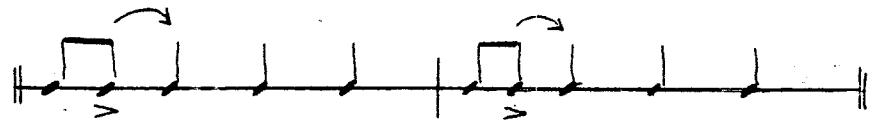
Swing Warm-Ups

- I) The Swing Quarter Note
 - A) Lock up with bass
 - B) 2 and 4 emphasis (hi-hat)
 - C) Add the eighth note pick-up

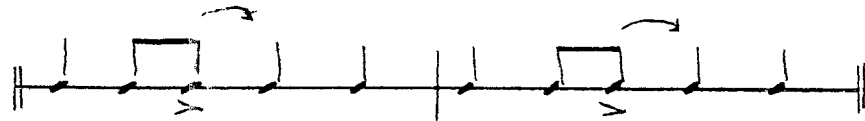
Pick-up to 1



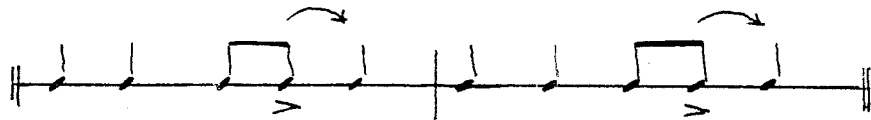
Pick-up to 2



Pick-up to 3

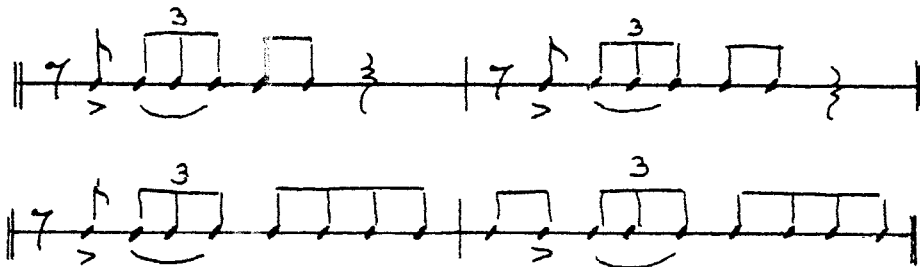


Pick-up to 4

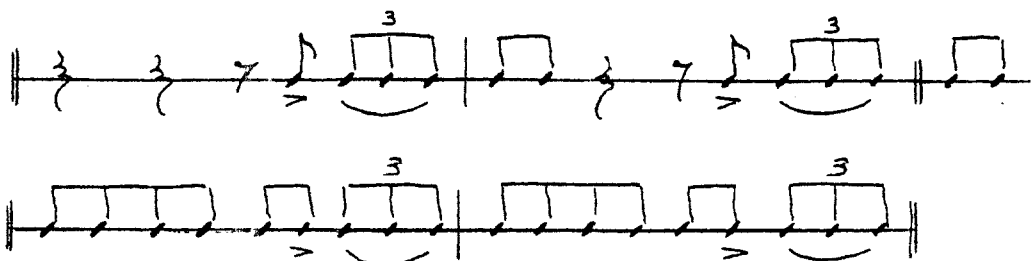


- D) Vary the 8th note pick-up (experiment). Pick-ups to 2 and 4 feel the best.
- E) Play only 8th notes (interrupting only for breathing).
- F) add the 8th note triplet (the triplet swings harder on beats 2 and 4)

Triplets on 2



Triplets on 4



Down All

2. The basic scale ascending to the 9th.

22

Musical notation for exercise 2, showing the basic scale ascending to the 9th. The notation is written for four staves: C (treble clef), Bb (treble clef), Eb (treble clef), and b.c. (bass clef). Each staff is labeled with a chord: Cm7, Dm7, Am7, and Cm7 respectively. The music shows an ascending scale with triplets and accents. A 'MM' line is at the bottom right.

3. The minor 9th arpeggio.

Musical notation for exercise 3, showing the minor 9th arpeggio. The notation is written for four staves: C (treble clef), Bb (treble clef), Eb (treble clef), and b.c. (bass clef). Each staff is labeled with a chord: Cm7, Dm7, Am7, and Cm7 respectively. The music shows an ascending arpeggio with triplets and accents. A 'MM' line is at the bottom right.

4. An arpeggio descending from the 11th of the chord.

Musical notation for exercise 4, showing an arpeggio descending from the 11th of the chord. The notation is written for four staves: C (treble clef), Bb (treble clef), Eb (treble clef), and b.c. (bass clef). Each staff is labeled with a chord: Cm7, Dm7, Am7, and Cm7 respectively. The music shows a descending arpeggio with accents and slurs. A 'MM' line is at the bottom right.